



- Stainless steel IP68 shear beam load cell
- Hermetically closed
- Suitable for hopper, platform and pallet scales
- High accuracy



Capacity	Accuracy	Part-Number
500 kg	C3	BM8H-C3-500kg-3B-SC
1 t	C3	BM8H-C3-1t-3B-SC
2 t	C3	BM8H-C3-2t-6B-SC
5 t	C3	BM8H-C3-5t-6B-SC

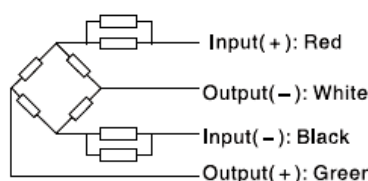
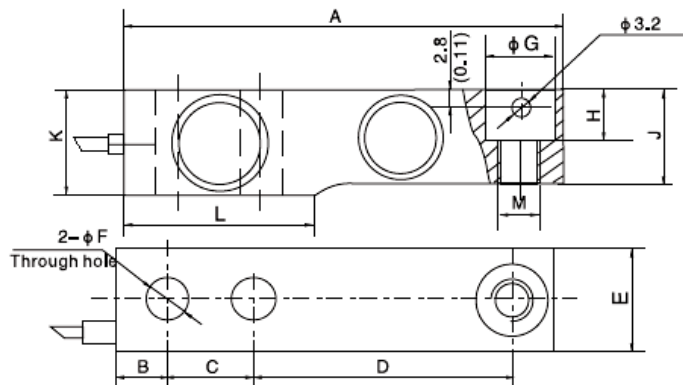
Specification:

Accuracy class		OIML R60 C3	N5
Output sensitivity (= FS)	mV/V	2.0 ± 0.02	
Maximum capacity (E _{max})	t	0.5, 1, 2, 5 ¹	
	klb	1, 2.5, 4, 5, 10	
Maximum number of load cell intervals (n _{LC})		3000	5000
Ratio of minimum LC verification interval Y = E _{max} / V _{min}		10000 - 15000	15000
Combined Error	%FS	± 0.020	± 0.026
Minimum dead load	kg	0	
Safe overload	of E _{max}	150 %	
Ultimate overload	of E _{max}	300 %	
Zero balance	of FS	< ± 1.0 %	
Excitation, recommended voltage	V	5 ~ 12	
Excitation maximum	V	18	
Terminal resistance, input	Ω	1000 ± 10	
Terminal resistance, output	Ω	1000 ± 10	
Insulation impedance	MΩ	≥ 5000 (at 50VDC)	
Temperature range, compensated	°C	-10 ~ +40	
Temperature range, operating	°C	-35 ~ +65	
Element material		Stainless steel	
Ingress Protection (according to EN 60529)		IP68	
Recommended torque on fixation bolts	Nm	M12:100 M20:700	
ATEX classification		II1G Ex ia II1C T4	II1D Ex iaD 20 T73°C

Note 1: 5 t pending OIML approved

Outline Dimensions in mm

Capacity	250kg (500lb)	500kg (1klb)	1,0t(2klb) (2.5k)	1,5t,2,0t (4klb,5klb)	5,0t (10klb)
Dimension					
A	130,0 (5,12)	130,0 (5,12)	130,0 (5,12)	130,0 (5,12)	172 (6,71)
B	15,7 (0,62)	15,7 (0,62)	15,7 (0,62)	15,7 (0,62)	19,1 (0,75)
C	25,4 (1,0)	25,4 (1,0)	25,4 (1,0)	25,4 (1,0)	38,1 (1,5)
D	76,2 (3,01)	76,2 (3,0)	76,2 (3,0)	76,2 (3,0)	95,3 (3,75)
E	31,3 (1,23)	31,3 (1,23)	31,3 (1,23)	31,3 (1,23)	37,5 (1,48)
F	13 (0,51)	13 (0,51)	13 (0,51)	13 (0,51)	20,4 (0,8)
G	20,5 (0,81)	20,5 (0,81)	20,5 (0,81)	20,5 (0,81)	30,2 (1,19)
H	14 (0,55)	14 (0,55)	14 (0,55)	14 (0,55)	19,8 (0,78)
J	25,3 (0,99)	26,0 (1,02)	27,95 (1,1)	31,95 (1,26)	40,0 (1,57)
K	31,6 (1,24)	31,6 (1,24)	31,6 (1,24)	35,7 (1,41)	43,8 (1,72)
L	57 (2,24)	57,1 (2,25)	57,1 (2,25)	57,1 (2,25)	76,2 (3,0)
M	M12 1/2-20UNF	M12 1/2-20UNF	M12 1/2-20UNF	M12 1/2-20UNF	M20 3/4-20UNF



Wiring:

- Shielded, 4 conductor cable.
- Standard cable length: 6m (2t ~ 5t, 4 klb ~ 10 klb) 3m (500kg ~ 1t, 1 klb ~ 2.5 klb).
- Cable type and cable length for customer's own application are available on request.
- Shield not connected to element.

Nr. 2009.12 BM8H Rev1